



# Open-Q™ 805 Development Kit based on the Qualcomm® Snapdragon™ 805 processor (APQ8084) Quick Start Guide

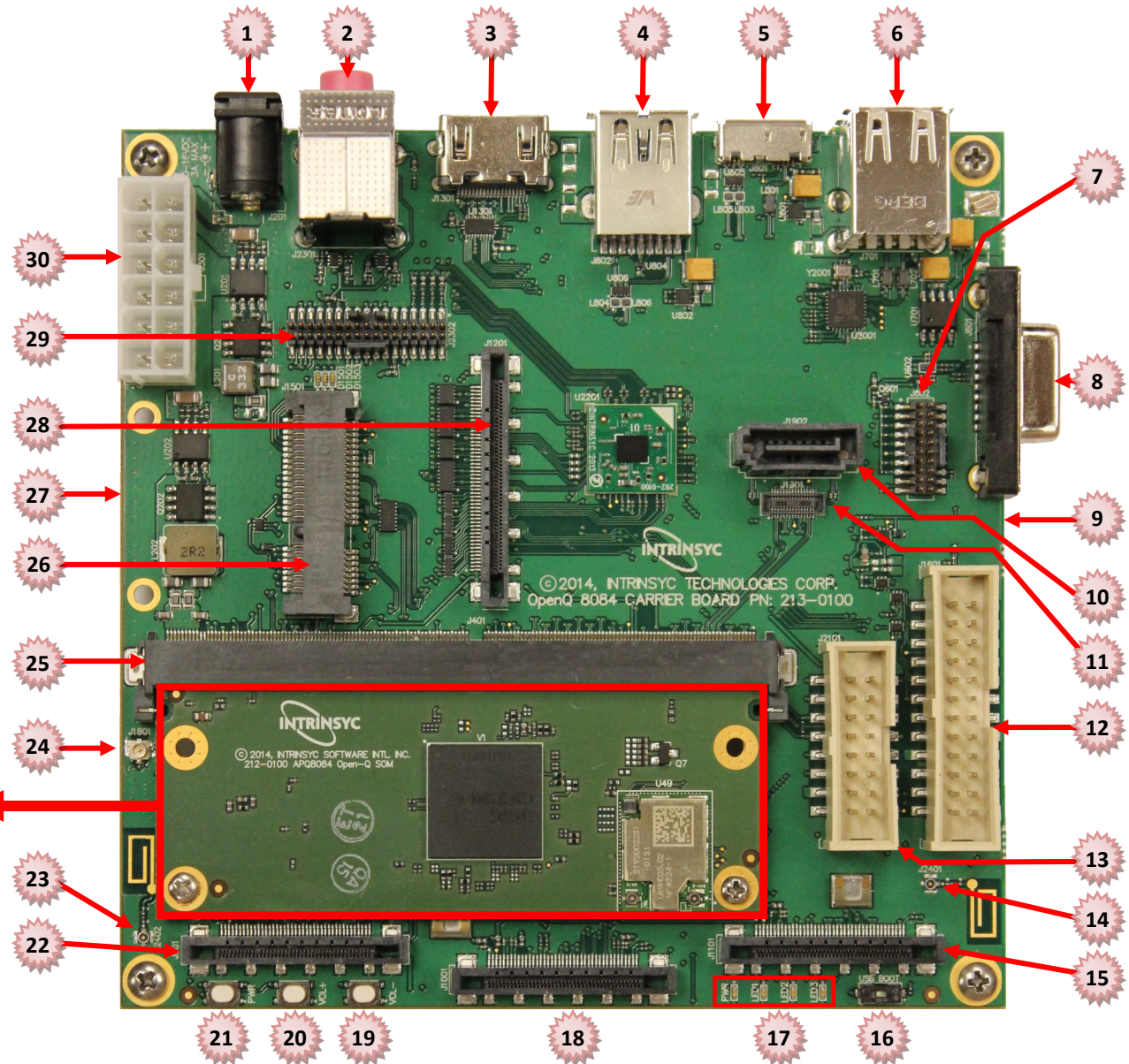
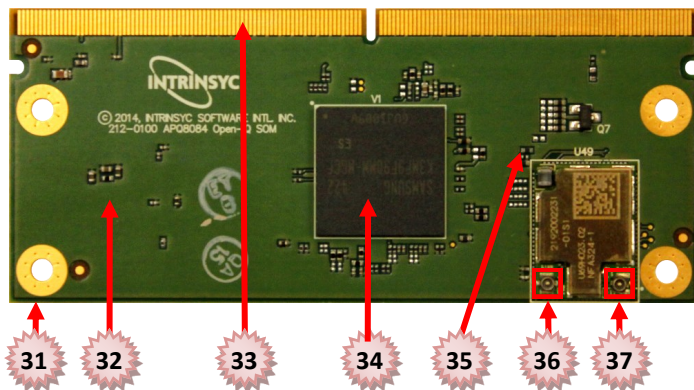


## Package Contents

1. Open-Q™ 805 SOM with APQ8084 and 3GB LPDDR3 RAM
2. Nano-ITX like form-factor carrier board
3. AC Power Adapter
4. 4.46" FWVGA MIPI DSI LCD (optional)

- |  |  |                                      |
|--|--|--------------------------------------|
| 1. 12V DC Jack                         | 15. Camera Module connector (CSI2)             | 27. UIM slot (Using PCIe)*           |
| 2. 3.5mm Audio Line Input/Output       | 16. USB Force-Boot Switch                      | 28. Display (DSI 0/1) connector      |
| 3. HDMI 1.4 Output                     | 17. Power LED and User LED 1—3 (Left to Right) | 29. Audio Codec I/O Connector        |
| 4. USB 3.0 (Type A)                    | 18. Camera Module Connector (CSI1)             | 30. Battery Development Connector    |
| 5. USB 3.0 (micro-AB)                  | 19. Volume Down Button                         | <b>31. Open-Q 805 SOM</b>            |
| 6. USB 2.0 (Type A) x2                 | 20. Volume Up Button                           | 32. PMA8084*                         |
| 7. JTAG header                         | 21. Power Button                               | 33. MXM 3.0 Board-Edge Connection    |
| 8. Debug UART                          | 22. Camera Module Connector (CSI0)             | 34. APQ8084 + 3GB LPDDR3 RAM         |
| 9. Micro-SD card slot*                 | 23. WiFi/BT Ant. #2 COAX Conn. (HSC)           | 35. 16GB eMMC*                       |
| 10. SATA port                          | 24. GPS Antenna COAX Conn. (U.FL)              | 36. WiFi/BT Ant. #1 COAX Conn. (HSC) |
| 11. UFS expansion port                 | 25. MXM 3.0 Connector                          | 37. WiFi/BT Ant. #2 COAX Conn. (HSC) |
| 12. Sensor and IoT Expansion Connector | 26. PCIe mini socket                           |                                      |
| 13. NFC/UIM Expansion Connector        |  |                                      |
| 14. WiFi/BT Ant. #1 COAX Conn. (HSC)   |  |                                      |

\*on bottom side



Your use of this document is subject to and governed by those terms and conditions in the Intrinsic Purchase and Software License Agreement for the based on the Open-Q™ 805 Development Kit based on the Qualcomm® Snapdragon™ 805 processor, which you or the legal entity you represent, as the case may be, accepted and agreed to when purchasing an Open-Q™ 805 Development Kit based on the Qualcomm® Snapdragon™ 805 processor from Intrinsic Technologies Corporation ("Agreement"). You may use this document, which shall be considered part of the defined term "Documentation" for purposes of the Agreement, solely in support of your permitted use of the Open-Q™ 805 Development Kit based on the Qualcomm® Snapdragon™ 805 processor under the Agreement. Distribution of this document is strictly prohibited without the express written permission of Intrinsic Technologies Corporation and its respective licensors, which they can withhold, condition or delay in its sole discretion.

Intrinsic is a trademark of Intrinsic Technologies Corporation, registered in Canada and other countries. Qualcomm and Snapdragon are trademarks of Qualcomm Incorporated, registered in the United States and other countries.



# Open-Q™ 805 Development Kit based on the Qualcomm® Snapdragon™ 805 processor (APQ8084) Quick Start Guide



## Development Kit Setup

1. Remove the development kit board carefully from the anti static bag
2. Connect the Display Board into the Display Connector (optional)
3. Connect the HDMI cable from the development kit to your display
4. Connect the Power Adapter; the board will boot automatically

## 5. Documentation and software

To access the documentation (schematics, user guides, datasheets, programming guides, tech notes...), platform BSP software and much more,

please register at: <http://support.intrinsyc.com>

Sign in Register

Intrinsyc Support Server

Login: myname@mycompany.com  
Email address

Password: .....

Forgot password Login >

First-time user please click here to register

## Development Kit Support

Should you require more information or assistance make sure to visit the Open-Q 805 FAQ page:

<http://www.intrinsyc.com/snapdragon-support/faq>

You can also contact us at [support@intrinsyc.com](mailto:support@intrinsyc.com)

Intrinsyc also provides technical information and videos on Snapdragon processors on: <https://www.intrinsyc.com/resources>

Should you require additional technical support for your Development Kit you can easily purchase a block of technical support hours from the Intrinsyc store:

<http://shop.intrinsyc.com/collections/product-development-kits>

Thank you for purchasing the Open-Q 805 Development Kit